

# Wildflower Cottage

RENÉE NANNEMAN



Wildflower Cottage Quilt designed by: **Renée Nanneman**  
Quilt Size: **63¾" x 76½"** • Skill Level: **Advanced**

# Wildflower Cottage Quilt

Introducing Andover Fabrics new collection: **WILDFLOWER COTTAGE** by Renée Nanneman  
Quilt designed by Renée Nanneman

Quilt finishes 63¾" x 76½"

*A quaint countryside cottage is partially hidden by the freshly laundered linens drying on the line aside a charming wildflower garden. Enter through the arched trellis of the garden gate covered with lush chains of petals. The meandering cobblestone path through the scatter garden has fern moss covering the aged gray stones. Sweet little meadowlarks flutter through the blossoms with a joyful song. Wildflower Cottage is a visual delight blooming with perennial flowers in sunlit shades of lavender, poppy, daffodil.*

## Cutting Directions

**Note:** Read assembly directions before cutting patches. All measurements are cut sizes and include ¼" seam allowances. A fat ⅓ is a 9" x 20"-22" cut of fabric. A fat ¼ is an 18" x 20"-22" cut. WOF designates the width of fabric from selvedge to selvedge (approximately 42" wide).

**Fabrics 1, 5** From each:  
Cut (4) squares 9"

**Fabrics 2, 3, 4, 6** From each:  
Cut (3) squares 9"

**Fabric 7**  
Cut (18) rectangles 4¾" x 9"  
Cut (4) squares 4¾"

**Fabrics 8, 9** From each:  
Cut (120) squares 2"

**Fabric 10**  
Cut (49) squares 3½"  
Cut (6) squares 5½", cut each in half diagonally twice to make 4 quarter-square triangles (22 total: 2 not needed)

**Fabric 11**  
Cut (15) squares 3⅜", cut each in half diagonally twice to make 4 quarter-square triangles (60 total)

**Fabric 12**  
Cut (3) squares 3⅜", cut each in half diagonally twice to make 4 quarter-square triangles (12 total)  
Cut (2) squares 4¾"

**Fabric 13**  
Cut (12) squares 3⅜", cut each in half diagonally twice to make 4 quarter-square triangles (48 total)

## Making the Quilt

When making the blocks, refer to these labels and the list of fabrics on the last page of the pattern.

<b>1</b> 1590-C	<b>2</b> 1590-L	<b>3</b> 1590-N	<b>4</b> 1591-C
<b>5</b> 1591-P	<b>6</b> 1591-R	<b>7</b> 1592-C	<b>8</b> 1592-L
<b>9</b> 1592-N	<b>10</b> 1593-C	<b>11</b> 1593-N	<b>12</b> 1593-R
<b>13</b> 1594-L	<b>14</b> 1594-N	<b>15</b> 1594-P	<b>16</b> 1595-C
<b>17</b> 1595-P	<b>18</b> 1595-R	<b>19</b> 1596-L	<b>20</b> 1596-P
<b>21</b> 1596-R	<b>22</b> 1597-C	<b>23</b> 1597-L	<b>24</b> 1597-P
<b>25</b> 1598-C	<b>26</b> 1598-L	<b>27</b> 1598-R	<b>28</b> 1599-C
<b>29</b> 1599-P	<b>30</b> 1599-R		

Fabric Requirements	Yardage
<b>Fabrics 1-6</b> set	⅔ yard each
<b>Fabric 7</b> border	1 yard
<b>Fabrics 8, 9</b> sash	½ yard each
<b>Fabric 10</b> sash	1 yard
<b>8 Fat ¼</b> triangles	fat ¼ each
Fabrics 11, 15, 20, 21, 24, 25, 29, 30	
<b>9 Fat ⅓</b> triangles	fat ⅓ each
Fabrics 12-14, 17-19, 22, 27, 28	
<b>Fabric 23</b> sash	1¼ yards
<b>Fabric 16</b> (+ binding)	1 yard
<b>Fabric 26</b> (backing)	5 yards

**Fabric 14**  
Cut (6) squares 3⅜", cut each in half diagonally twice to make 4 quarter-square triangles (24 total)

**Fabric 15**  
Cut (12) squares 3⅜", cut each in half diagonally twice to make 4 quarter-square triangles (48 total)  
Cut (4) squares 4¾"

**Fabric 16**  
Cut (8) strips 2½" x WOF for binding  
Cut (15) squares 3⅜", cut each in half diagonally twice to make 4 quarter-square triangles (60 total)

**Fabric 17**  
Cut (1) square 3⅜", cut in half diagonally twice to make 4 quarter-square triangles  
Cut (3) squares 4¾"

**Fabric 18**  
Cut (2) squares 3⅜", cut each in half diagonally twice to make 4 quarter-square triangles (8 total)  
Cut (2) squares 4¾"

# Wildflower Cottage Quilt

---

## Fabric 19

Cut (12) squares  $3\frac{3}{8}$ ", cut each in half diagonally twice to make 4 quarter-square triangles (48 total)

## Fabric 20

Cut (4) squares  $3\frac{3}{8}$ ", cut each in half diagonally twice to make 4 quarter-square triangles (16 total)  
Cut (2) squares  $4\frac{3}{4}$ "

## Fabric 21

Cut (2) squares  $3\frac{3}{8}$ ", cut each in half diagonally twice to make 4 quarter-square triangles (8 total)  
Cut (3) squares  $4\frac{3}{4}$ "

## Fabric 22

Cut (3) squares  $3\frac{3}{8}$ ", cut each in half diagonally twice to make 4 quarter-square triangles (12 total)

## Fabric 23

Cut (120) squares  $3\frac{3}{8}$ ", cut each in half diagonally twice to make 4 quarter-square triangles (480 total)

## Fabric 24

Cut (1) square  $3\frac{3}{8}$ ", cut each in half diagonally twice to make 4 quarter-square triangles  
Cut (4) squares  $4\frac{3}{4}$ "

## Fabric 25

Cut (15) squares  $3\frac{3}{8}$ ", cut each in half diagonally twice to make 4 quarter-square triangles (60 total)  
Cut (1) square  $4\frac{3}{4}$ "

## Fabric 27

Cut (1) square  $3\frac{3}{8}$ ", cut in half diagonally twice to make 4 quarter-square triangles  
Cut (3) squares  $4\frac{3}{4}$ "

## Fabric 28

Cut (2) squares  $3\frac{3}{8}$ ", cut each in half diagonally twice to make 4 quarter-square triangles (8 total)  
Cut (1) square  $4\frac{3}{4}$ "

## Fabric 29

Cut (8) squares  $3\frac{3}{8}$ ", cut each in half diagonally twice to make 4 quarter-square triangles (32 total)  
Cut (2) squares  $4\frac{3}{4}$ "

## Fabric 30

Cut (6) squares  $3\frac{3}{8}$ ", cut each in half diagonally twice to make 4 quarter-square triangles (24 total)  
Cut (3) squares  $4\frac{3}{4}$ "

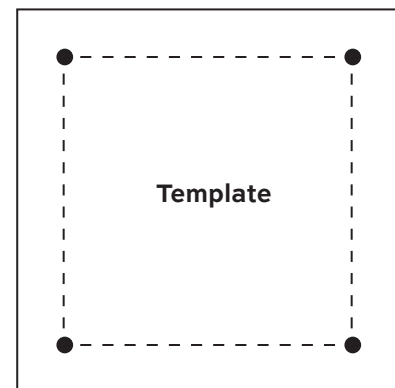
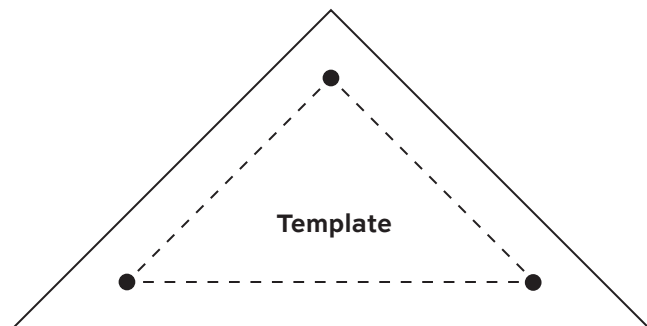
## Fabric 26 (Backing)

Cut (2) lengths  $37$ " x  $87$ ", pieced to fit quilt top with overlap on all sides

---

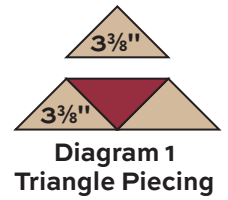
## Making the Quilt

1. There are multiple pieced units made with 4 triangles or a square and 2 triangles. To facilitate the sewing process, follow these directions. Trace the triangle and square templates on acrylic, including the dots. Cut out acrylic templates and use an ice pick to make a hole at each of the dots. Mark the 3 dots on the back side of each small  $3\frac{3}{8}$ " triangle. Mark the dots at the corners of each  $2$ " square.

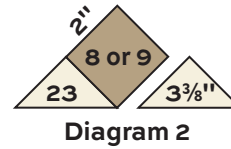


# Wildflower Cottage Quilt

2. Refer to the Triangle Units to choose 2 fabrics for each unit. Cut out and mark the 4 triangles needed for a unit. Matching dots, join the 4 triangles to make a pieced unit (Diagram 1). Make the units in the numbers shown. Hint: Pin together the groups of like Triangle Units and label them with the letters. These will identify the units when making the sashes.



3. Likewise, sew Fabric 23 triangles to each Fabric 8 or Fabric 9 square (Diagram 2). Make 120 each of these units.



**Make 4 each**

<b>A</b> 11 12	<b>B</b> 11 27	<b>C</b> 11 30	<b>D</b> 13 12	<b>E</b> 13 17
<b>F</b> 13 24	<b>G</b> 13 30	<b>H</b> 15 18	<b>I</b> 15 20	<b>J</b> 16 15
<b>K</b> 16 30	<b>L</b> 19 15	<b>M</b> 20 15	<b>N</b> 22 15	<b>O</b> 25 12
<b>P</b> 29 30	<b>Q</b> 29 18			

**Make 8 each**

<b>R</b> 11 15	<b>S</b> 14 21	<b>T</b> 16 29	<b>U</b> 25 30	<b>V</b> 25 28
----------------------	----------------------	----------------------	----------------------	----------------------

**Make 12**

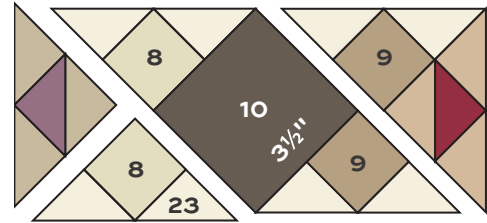
<b>W</b> 19 16	<b>8</b> 23 23	<b>9</b> 23 23
----------------------	----------------------	----------------------

Make 120      Make 120

Triangle Units

# Wildflower Cottage Quilt

4. Refer to the Sash Piecing diagram and the Sashing Blocks. Select the appropriate units from Step 2 for each sash, and note where the Fabric 8 and Fabric 9 patches are positioned in the sash. Arrange the pieced triangles and a Fabric 10 (3½") square. Join the parts into diagonal rows as shown, and then join the rows to make a Sash. Make 49 Sashes.

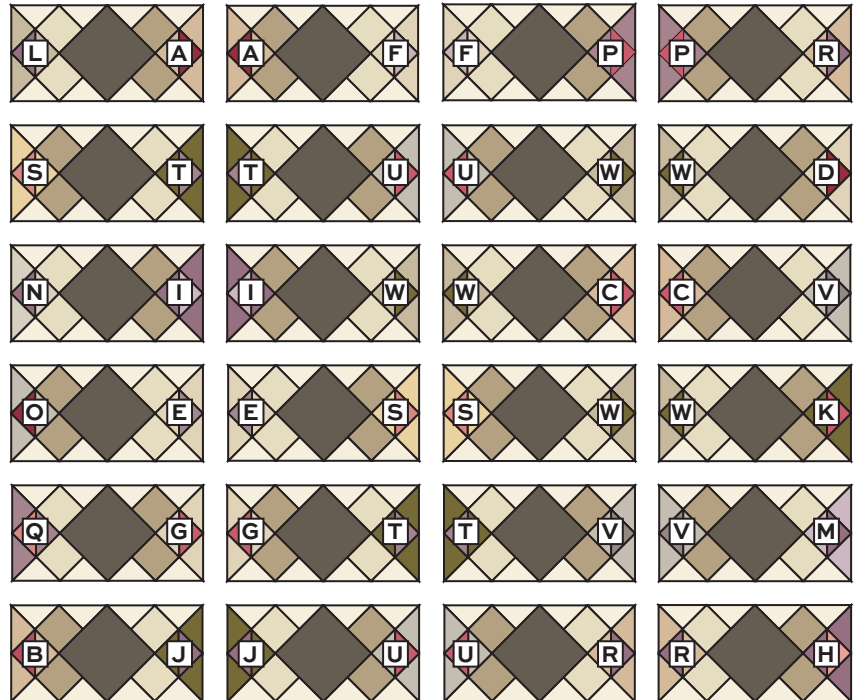


Sash Piecing – Make 49

## Vertical Sashings

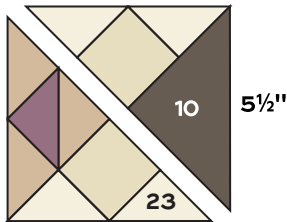


## Horizontal Sashings



Sashing Blocks

- Refer to the Border Block Piecing diagram. Arrange a triangle from Step 2, 2 triangles from Step 3, and a Fabric 10 (5½") quarter-square triangle. Note which blocks use Fabric 8 and which use Fabric 9 patches. Make 22 Border Blocks.

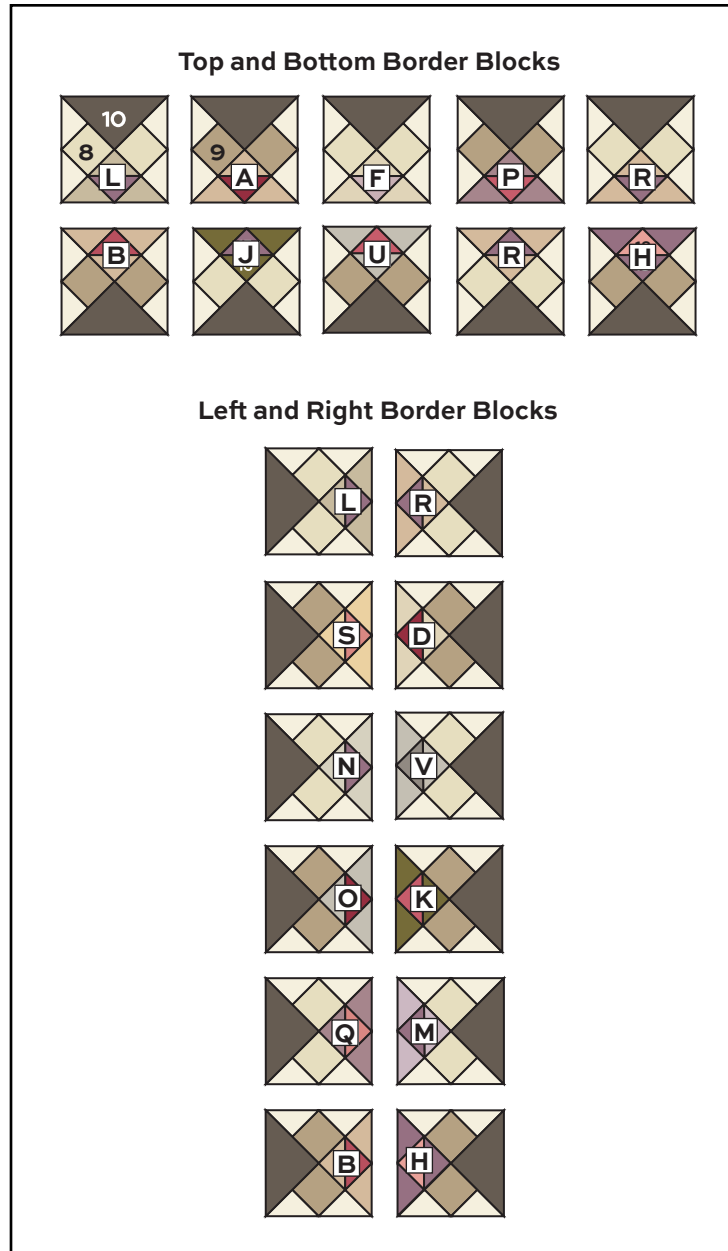


**Border Block Piecing**  
Make 22

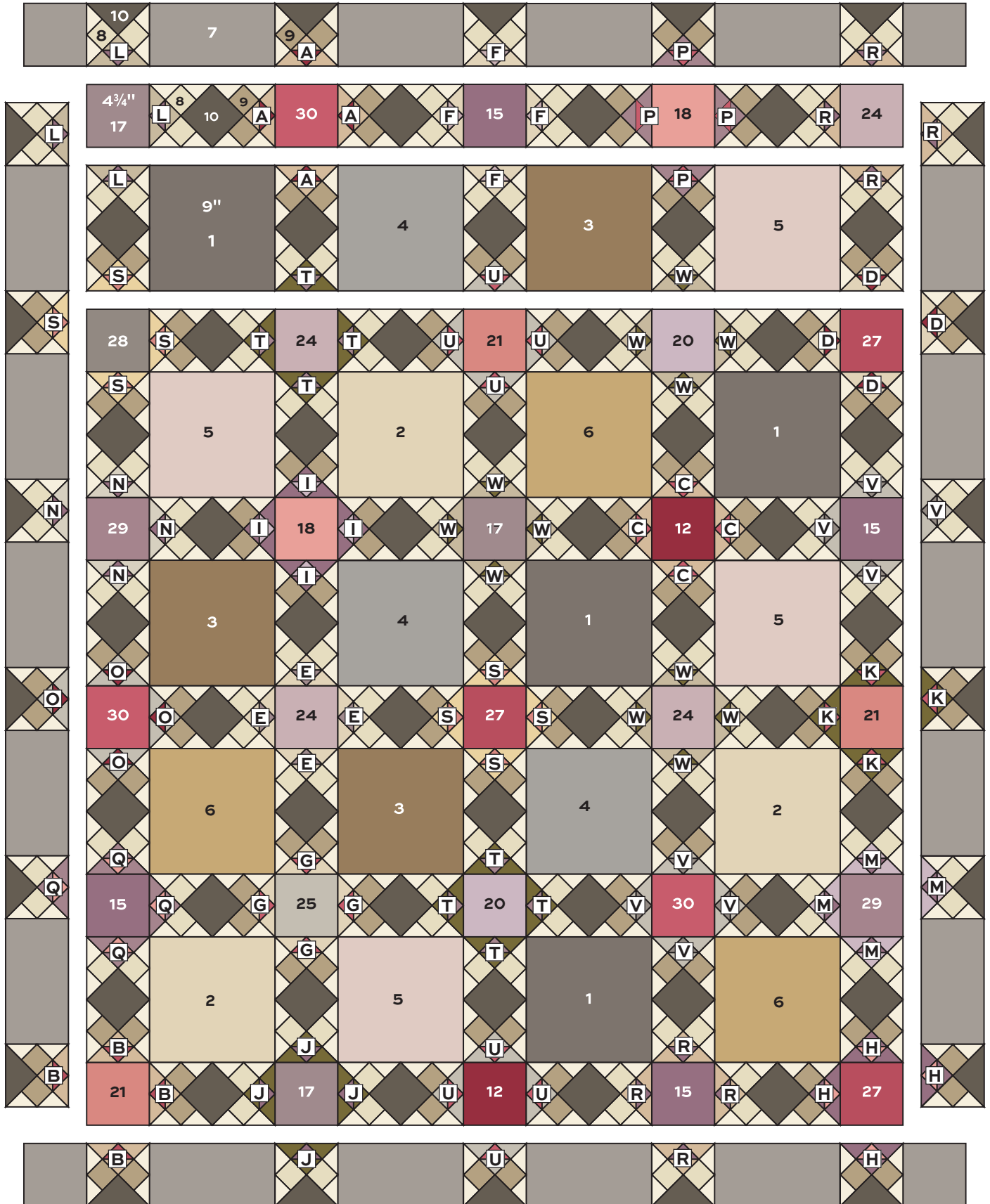
- The quilt is made with 6 sash rows, 5 block rows, and the pieced borders. Refer to the Quilt Assembly for the next steps. Arrange and join 4 Sashes with 5 floral 4¾" squares in a horizontal row. Press seam allowances toward the squares. Make 6 sash rows.
- Arrange and join 5 Sashes with 4 floral 9" squares. Press seam allowances toward the squares. Make 5 block rows.
- Join the rows, alternating types.
- Arrange and join Fabric 7 rectangles with the Border Blocks to make 2 side borders, orienting the blocks so the gray fabric is on the outer edges of the quilt. Sew to the sides of the quilt.
- Join Fabric 7 rectangles and squares with Border Blocks to make the top and bottom borders. Sew to the quilt.

## Finishing the Quilt

- Layer the quilt with batting and backing and baste. Quilt in the ditch around all patches. Quilt around the printed motifs in the squares. Bind to finish the quilt.



# Wildflower Cottage Quilt



Quilt Assembly

# Wildflower Cottage RENÉE NANNEMAN



1590-C



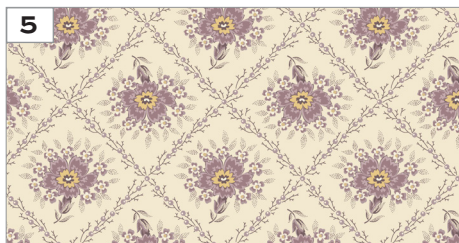
1590-L



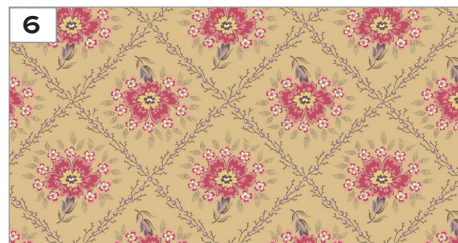
1590-N



1591-C



1591-P



1591-R



1592-C



1592-L



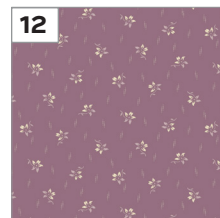
1592-N



1593-C



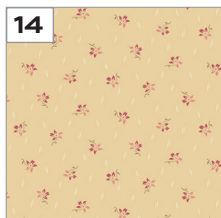
1593-N



1593-R



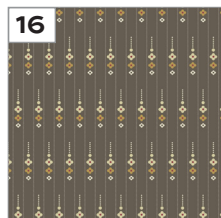
1594-L



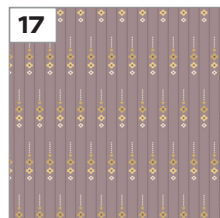
1594-N



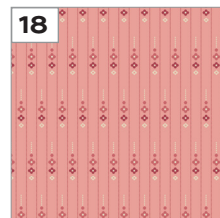
1594-P



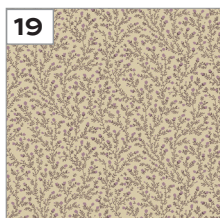
1595-C



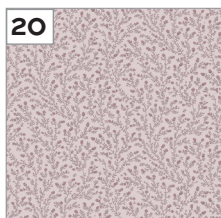
1595-P



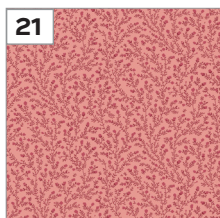
1595-R



1596-L



1596-P



1596-R



1597-C



1597-L



1597-P



1598-C



1598-L



1598-R



1599-C



1599-P



1599-R

All fabrics are used in quilt pattern.  
Fabrics shown are 25% of actual size.

Free Pattern Download Available

1384 Broadway, 24th Floor, New York, NY 10018

Tel. (800) 223-5678 • [andoverfabrics.com](http://andoverfabrics.com)